

SD 302-21



Storage Cabinet



Outstanding performance

The SD Series is equipped with a dynamic drying unit U-2000. Engineered for medium to long-term constant low humidity storage of $\leq 1\%$ RH.

Humidity, temperature, alarm functions are shown and can be adjusted on a digital display.

The circulation of air in the cabinet is regulated through an integrated fan.

All surfaces are ESD coated in conformity with current ESD 61340-5-1 standard.

The SD 302-21 is ideal for the moisture-proof and anti-oxidation storage of wide-ranging technologies and conforms with IPC/JEDEC J- STD 033C & IPC-1601.



SD 302-21

Standard Features

✓ Accuracy of sensor RH% & T°C	+/- 3% RH, +/- 0,3°C
✓ ESD safe design	Norm (IEC 61340-5-1) ESD metal painted body (<10 ⁶ Ohm/sq) Dissipative glazing (in- and outside 10 ⁸ Ohm/sq)
✓ Door alarm buzzer	Longer door openings are detected
✓ Lockable doors	2 doors locked with key
✓ Shelves	In height adjustable ESD painted steel shelves (7 pcs)
✓ 1 series digital display	Very convenient settings of RH%, temperature, alarm and calibration functions.
✓ Drying unit	U-2000 drying unit
✓ ESD bonding point	ESD wristband can be connected to the cabinet
✓ Pre mounted holes	For nitrogen unit & heater
✓ Power supply	Power cord 5 meter with IEC plug

Benefits

✓ Datalogging	Through network with software
✓ Recovery time after door opening	<15 minutes to below 1% (by 1 door opening)
✓ Highly energy efficient	Average power consumption 35 W/h.
✓ Option availability	N ₂ auto flow, heating, SMD reel racks, etc.
✓ IPC	According to IPC-JEDEC J-STD 033C & IPC-1601
✓ Temperature	Maximal up to 40°C (optional)
✓ Maintenance	The drying unit is maintenance free, easy to service

SD 302-21

Technical data cabinet

- ✓ External dimensions: (W x H x D) 500 x 1277 x 640 mm
- ✓ Internal dimensions: (W x H x D) 490 x 1124 x 602(594) mm
- ✓ Weight: 68 kg
- ✓ Weight on shelf: 30 kg
- ✓ Max. loading capacity: 100 kg
- ✓ Body: Steel, conductive coated $10^8 \Omega/\text{sq}$
- ✓ Shelves (WxD): 4 pcs long, 468 x 510 mm adjustable.
3 pcs short, 468 x 468 mm adjustable.
- ✓ Volume: 320 L
- ✓ Electric supply: 230 VAC (120 VAC optional)
- ✓ Power consumption: Average 35 W/h (excl. heating)
- ✓ Protection class: Class 1, hard grounded
- ✓ Humidity level cabinet: $\leq 1\%$ RH depending on amount of door openings

Technical data type 1 display

Settings

- ✓ Nominal value humidity
- ✓ Nominal value humidity alarm (light)
- ✓ Delay time humidity alarm
- ✓ Nominal value temperature
- ✓ Door alarm buzzer
- ✓ Offset possibilities

Technical data dry-unit U-2000 series

- ✓ Control: Adjustable with control panel type 1
- ✓ Dehumidifying Temperature: 10 – 40° C
- ✓ Electric supply: 230 VAC (120 VAC optional)
- ✓ Dimensions (L x B x H): 260 x 380 x 100 mm
- ✓ Weight: 8,1 kg

SD 302-21

Technical data heater SH-230-1

✓ Voltage:	230 VAC / 50 Hz (120 VAC / 60 Hz optional)
✓ Power:	530 W
✓ Temperature sensor:	PTC 100
✓ Thermal protection:	90 °C
✓ Temperature range:	30 - 40 °C
✓ Air flow:	86 m ³ /h
✓ Display tolerance:	1 digit at 25 °C

Technical data N² (Auto) Flow

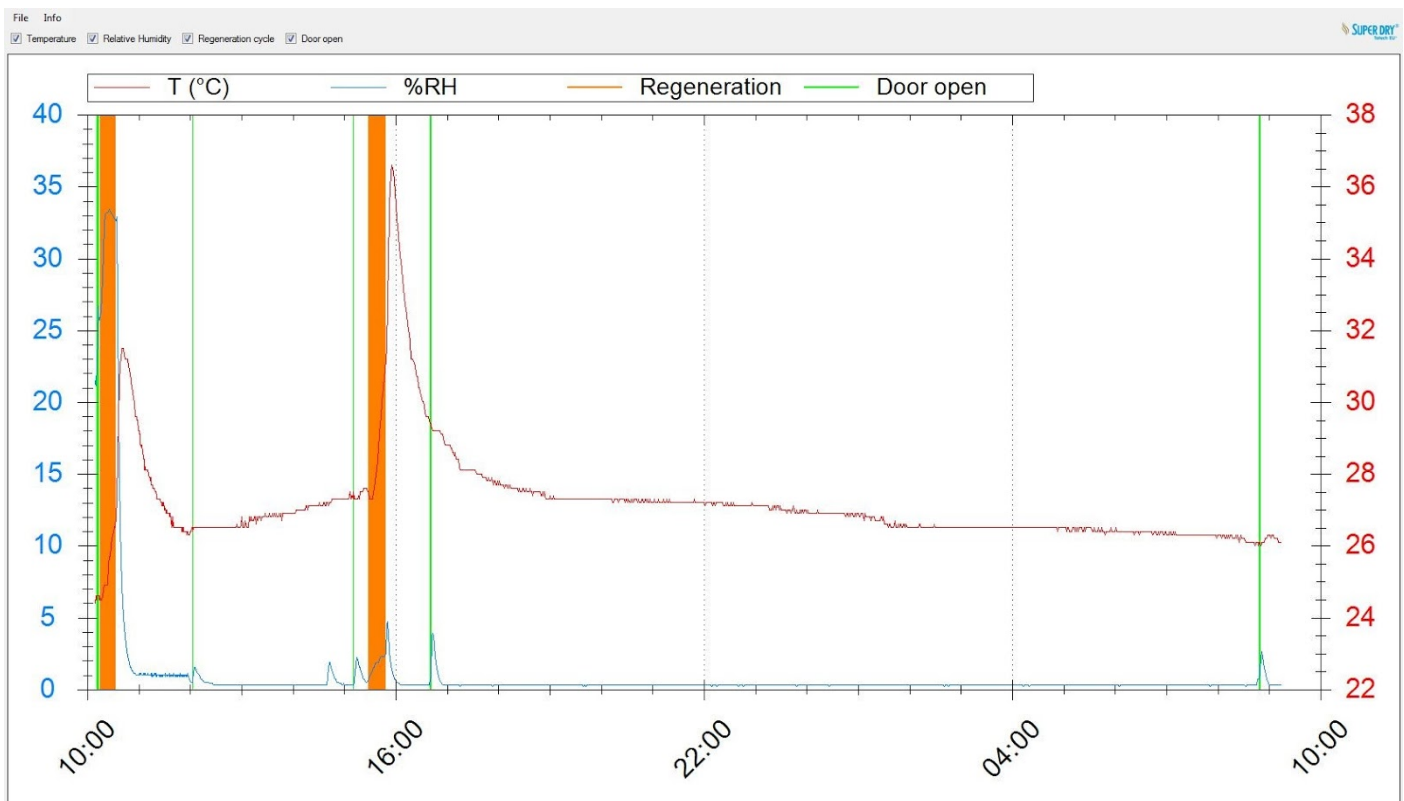
✓ Power supply:	90 - 230 VAC
✓ N ² connection:	8mm hose connection
✓ N ² pressure:	1 - 6 bar
✓ N ² standby amount:	0 - 25 L/min
✓ N ² purge:	0 - 25 L/min
✓ Purge time:	0 - 99 min

SD 302-21

Free Totech viewer

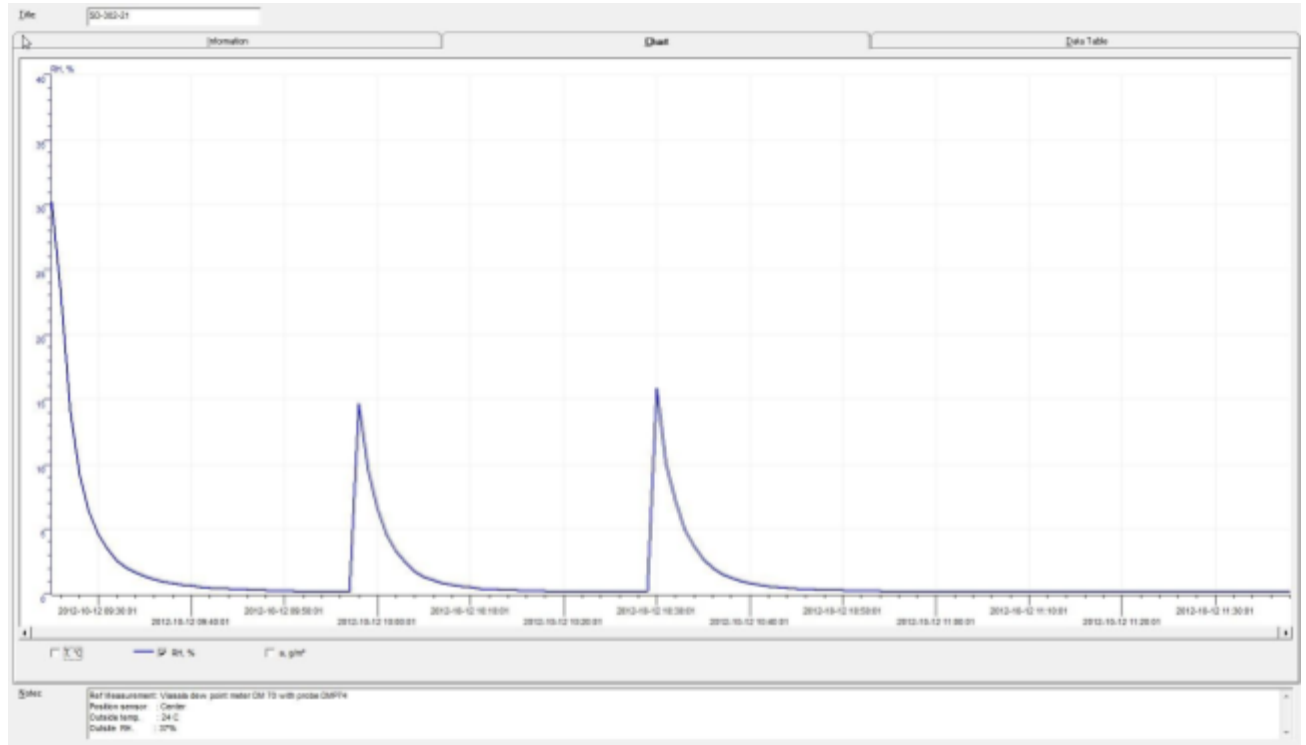
- ✓ Writing of climate data, door openings and alarms to SD card
- ✓ Transfer data through Ethernet to PC (history data)
- ✓ User-friendly display of all relevant data
- ✓ Data processing in MS-Excel

- ✓ Seamless documentation
- ✓ Excellent process safety



SD 302-21

Performance test

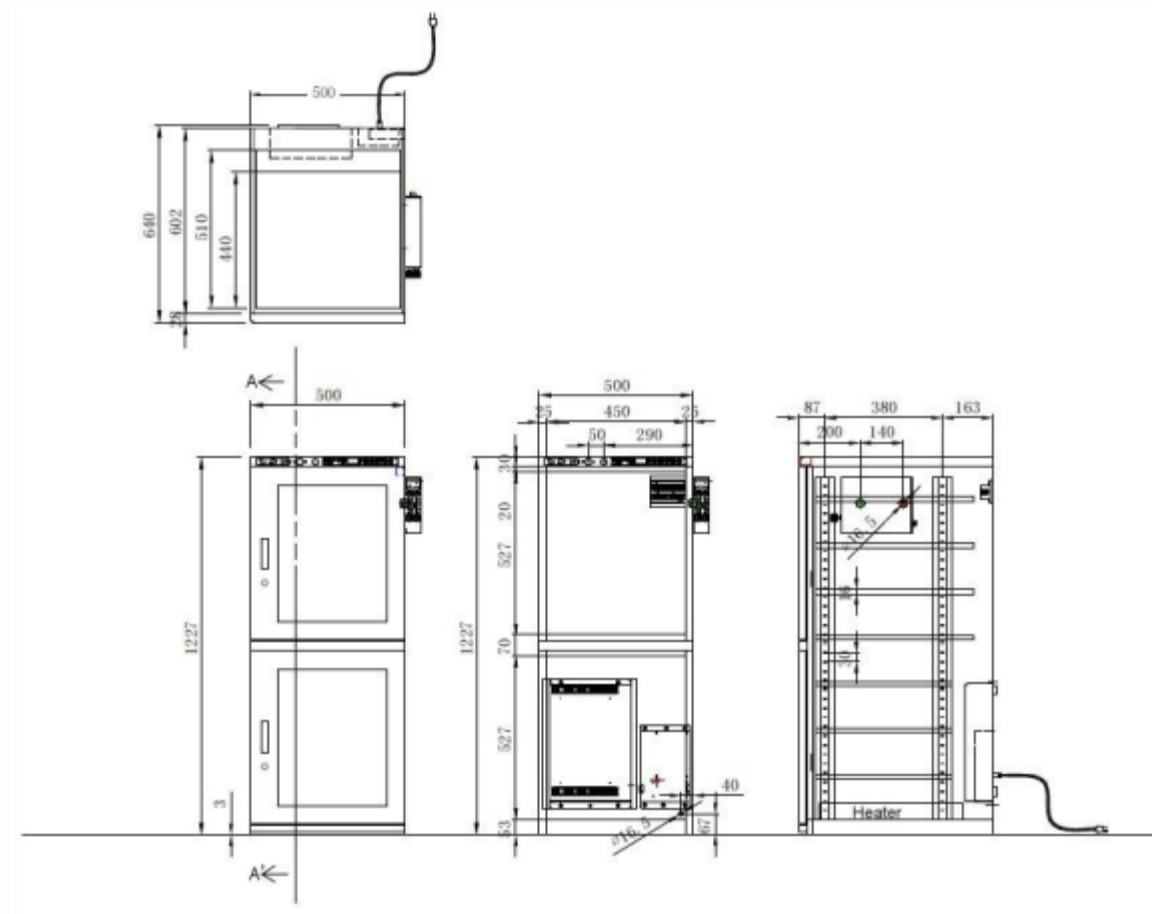


Test conditions

- ✓ Instrument: Vaisala
- ✓ Type of dew point sensor: Vaisala drycap 180M
- ✓ Accuracy of dew point sensor: $\pm 0,2^{\circ} \text{C}$ at $+ 20^{\circ} \text{C}$ ($+ 68^{\circ} \text{F}$)
- ✓ Location of sensor: In the direct surroundings of the cabinet sensor
- ✓ Ambient conditions: Hum. $50 \pm 5\% \text{ rH}$, $22^{\circ}\text{C} \pm 2^{\circ}\text{C}$, Pressure $994 \pm 20 \text{ hPa}$
- ✓ Door openings: 2 door openings, 15 sec.

For more detailed test results, please refer to our website.

Technical drawings



Dimensions mentioned in mm.

Shelves

Number of different types of shelves that can be mounted in the cabinet

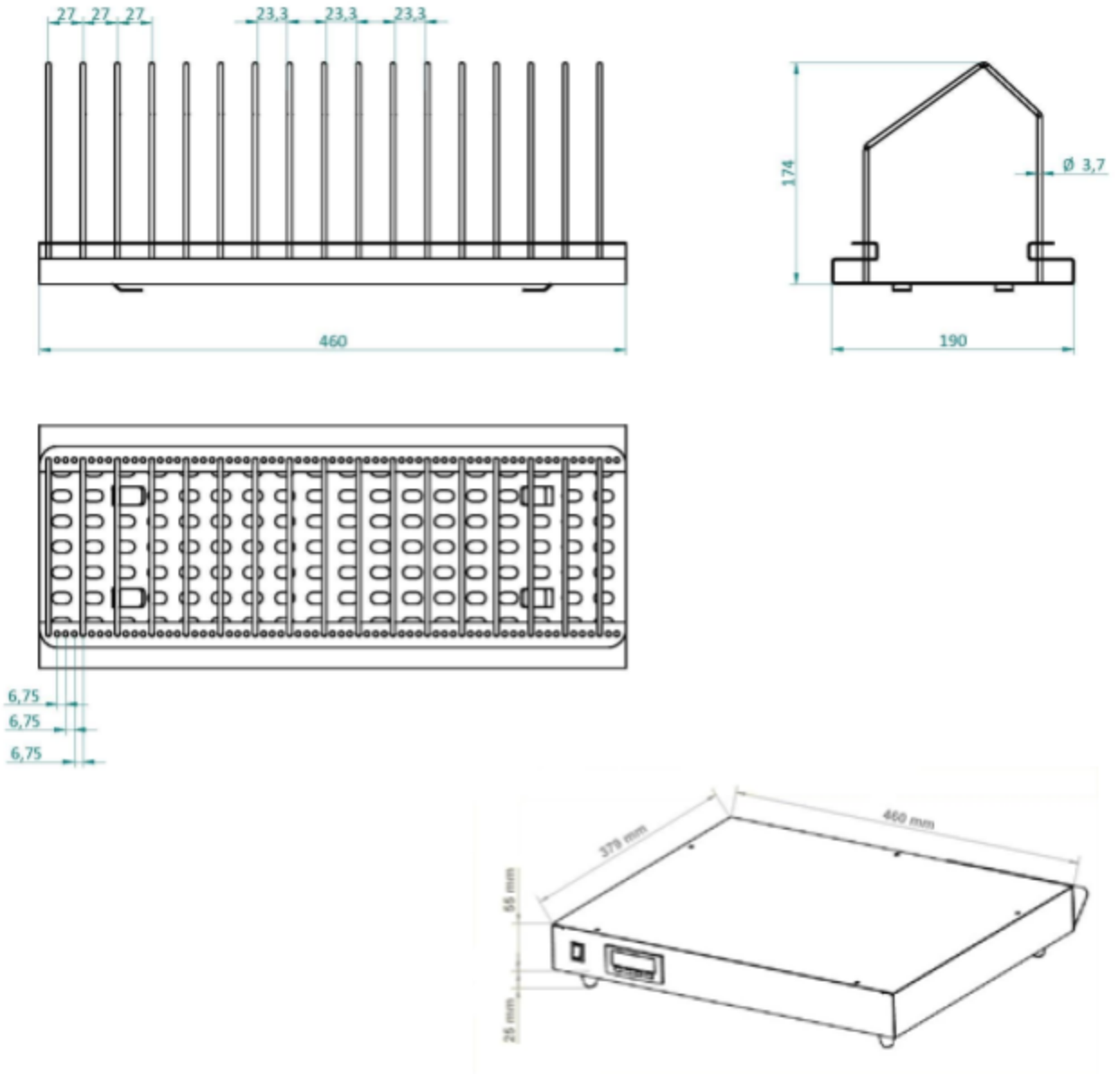
Number of shelves bottom section	1	2	3	
Distance (in mm) between shelves if equally divided in bottom section	x	165	103	x
Remaining space between top shelf and middle beam	295	155	120	x
Remaining space between bottom shelf and bottom cabinet	265	175	145	x
Loading capacity shelves m ² (1155 mm x 780 mm)	0,22	0,44	0,66	x

Number of shelves top section	1	2	3	4
Distance (in mm) between shelves if equally divided (if bottom shelf is mounted at lowest possible position in top section)	x	250	160	125
Remaining space between top shelf and top beam	495	245	160	105
Remaining space between bottom shelf and middle beam	0	0	0	0
Loading capacity shelves m ² (1155 mm x 780 mm)	0,24	0,48	0,71	0,95

Measurements can slightly deviate.

SD 302-21

Technical drawings



SD 302-21

Options



SMD Reel rack with reel supports
460 mm length.

Item number 20014000



Reel support
Additional reel supports for 20014000.

Item number 20014200



Humidity alarm signal lamp
One color (orange or red), magnetically fixed, providing optical signals on operational states and exceeded limit values. Operates on 24V.

Item number 20016033



N² Autoflow system
The autoflow system is developed to use in combination with a Totech drying cabinet. The device is used for the quick removal of moisture in the cabinet after the doors have been opened. The drying process is realised by using Nitrogen (N²), which is purged automatically after the doors are closed. (timer controlled)

Item number 22613001

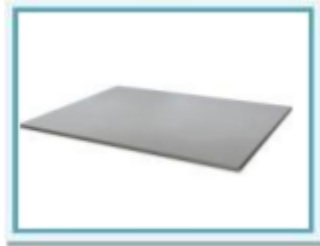


Heater SH 230-1
40°C heater

Item number 21001300

SD 302-21

Options



Shelf standard

Chrome steel shelf, short:
Item number 20030210

Chrome steel shelf, long:
Item number 20030202



Set main spare parts SD cabinet

Set includes the main spareparts of the SD cabinet: Dry-unit U-2000,
Main PCB and Power Supply
Item number 30006099

Exchange set main spare parts SD cabinet:
Item number 30006096



SuperDry Data Logger

Highly accurate data logger with standard Ethernet interface.
Compatible with the Free Totech Viewer and Totech Monitor.

Item number 47000582