



ProReflow WDR-D Series

Drawer Reflow Oven



Features:

WDR-D series reflow oven is mainly for the production and maintenance of SMT products such as desktop solder reflow equipment. The product uses high efficiency far infrared heating elements and distributed thermocouple temperature measurement device. Through the microcomputer's precise control, the temperature of the reflow oven curve control can be more accurate, and the temperature of the reflow plane can be more uniform. WDR series reflow oven is fully able to adapt to a variety of different alloys and lead-free solder reflow requirements. Its temperature curve precision can be adjusted; in addition, this kind of equipment also has automatic fault detection alarm and other functions.

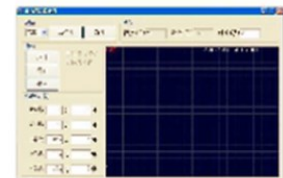
Model	WDR20-D	WDR25-D	WDR35-D	WDR50-D
Power Supply	AC220V (AV110V custom-made) 50~60 Hz			
Max Power	700W	1600W	2400W	3600W
Heating Method	Infrared Radiation Heating	Infrared Radiation Heating & Hot Air Circulation		
Effective Welding Area	200x150 mm	250x200 mm	350x300 mm	500x400 mm
Drawer Size	250x180x20 mm	300x250x30 mm	400x330x30 mm	550x430x30 mm
	Remark: Regard these size as valid welding area, please pay attention and distinguish			
Operating System	Chinese and English Bilingual Language Operate System			
Display Mode	Graph Mode/Text Mode and Display Mode Optional			
Temperature Curve Zones	Preheating Zone, Heating Zone, Holding Zone and Cooling Zone Totally Five Zones			
Net Weight	13.5 kg	19 kg	24.9 kg	37.1 kg
Gross Weight	15 kg	20.5 kg	27.3 kg	40.1 kg
Outline Size	375x350x312 mm	425x400x312 mm	525x500x312 mm	675x600x312 mm
Packaging Size	420x390x390 mm	480x440x390 mm	575x540x390 mm	730x640x390 mm



Liquid Crystal Display (LCD)



Infrared Heating Tube



PC On-line Operate



Observe Screen



Magnetism Absorb Seal



Ceramic Thermoelectric Couple