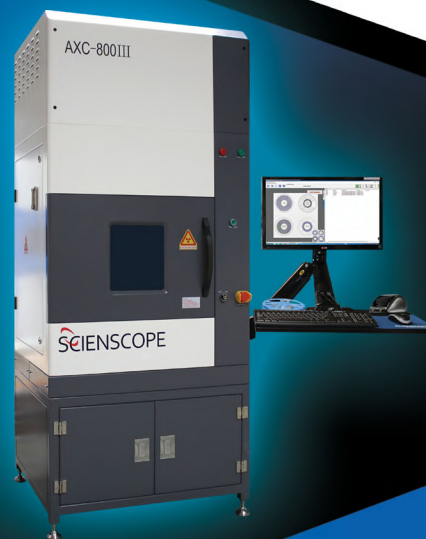
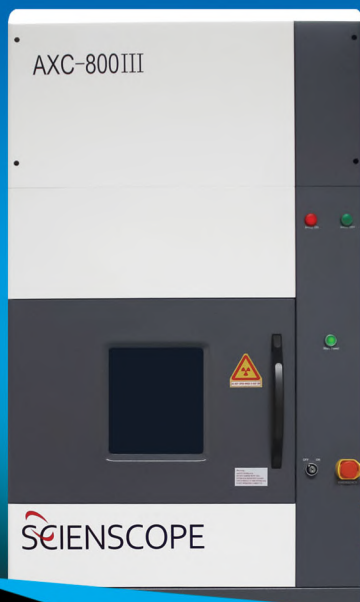


AXC-800 III

COMPONENT COUNTER

SCIENSCOPE
INTERNATIONAL



AXC-800 III Component Counting System

The Scienscope AXC-800 III makes inventory management and component counting even more fast, accurate and easy than ever before. Simply place reels in the system, close the door and the count begins automatically. Within 23 seconds the AXC-800 III Component Counter completes the task of counting four 7" reels and within 16 seconds it completes the task of counting 1 large 13"-15" reel. This system features an internal barcode scanner and a reel removal sensor for automatic label printing. Save time, save labor, save money and avoid the dreaded "line down" scenario due to lack of a component.

Applications

- ✓ Tubes
- ✓ JEDEC Trays
- ✓ 7", 13" and 15" Reels
- ✓ BGA Ball Count
- ✓ Loose Wound Components
- ✓ Cut Strips
- ✓ Copper Splice
- ✓ Sealed ESD Bags
- ✓ Tightly Wound Components
- ✓ Desiccant Penetrable

System Details

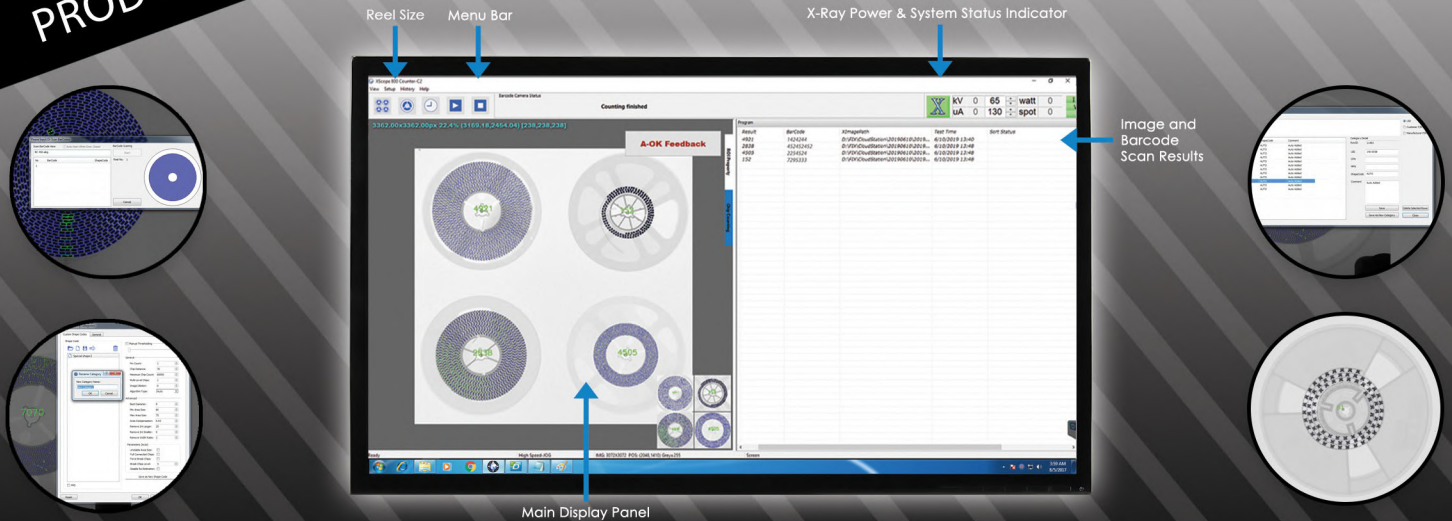


FEATURING

- Turnkey operation
- Fast, Intuitive, user friendly software interface with 99.9% accuracy
- Internal Barcode Scanning, no more mixed match barcodes
- Reel removal sensor for automatic label printing
- Scanning of (4) 7" reels simultaneously
- Scanning of 13" or 15" reels
- Scanning of JEDEC trays and counting of BGA balls
- Scanning of loose wound components or tightly wound components
- Scanning inside ESD bags
- Built in library
- Small footprint
- Industrial PC : Microsoft Windows 10 (64-bit)

PRODUCT SPECIFICATIONS

**FASTER FUTURISTIC TECHNOLOGY WITH
INTERNAL BARCODE SCANNING!**



MACHINE SPECIFICATIONS



Technical Operation

- ✓ Compatible Reel Sizes: (1-4) 7" reels, (1) 13 or 15" reel with a maximum of 74mm reel height
- ✓ Minimum Component Size: 01005"
- ✓ Count Accuracy: $\geq 99.9\%$
- ✓ Cycle Time (barcode scanning time included): (1) 7" reel approximately 15 seconds, (4) 7" reels approximately 23 seconds and 13"-15" reels approximately 16 seconds per 1 reel.
- ✓ Types of Inspection: Standard SMT and TH, Standard reels up to 15" diameter, Cut Strips, ESD Bags, JEDEC Trays and BGA Ball Count.
- ✓ Internal Barcode Reader: Software interface for 1D/2D internal barcode scanning camera
- ✓ Label Printing: Software interface for automatic label printing of barcodes / component count results. (Label printer optional)

X-Ray Tube

- ✓ X-Ray Source: Micro-focus, integrated (closed)
- ✓ Operating Power: 50w

Flat Panel Detector (17"x17")

- ✓ Grayscale: 16 bit (65,536 shades of grayscale)
- ✓ Resolution: 8k

General Machine Specs

- ✓ Dimensions: 63" x 44" x 81" / 1600mm x 1117mm x 2057mm
- ✓ Weight: 616kg /1360 lbs.
- ✓ Power: AC 110 – 220 VAC 50/60 Hz 0.8kW
- ✓ Industrial PC: Microsoft Windows 10 (64-bit)

THIS SYSTEM INCLUDES A 1 YEAR WARRANTY ON PARTS AND LABOR

Compliance

THE SCIENSCOPE X-SCOPE X-RAY INSPECTION SYSTEMS MEET THE FDA-CDRH REGULATION CFR 21.1020.40 SUBCHAPTER J FOR CABINET X-RAY SYSTEMS. THE FDA-CDRH STANDARD FOR CABINET X-RAY SYSTEMS STATES THAT RADIATION EMISSIONS WILL NOT EXCEED 50 MICRO R/HR 5 CM FROM ANY EXTERNAL SURFACE. THE X-SCOPE X-RAY INSPECTION SYSTEMS TYPICALLY HAVE A RADIATION EMISSION READING OF LESS THAN 20 MICRO R/HR 5 CM FROM ANY EXTERNAL SURFACE. ALL SCIENSCOPE X-SCOPE X-RAY SYSTEMS HAVE A CE APPROVAL. SCIENSCOPE X-SCOPE X-RAY SYSTEMS ARE CLASSIFIED AS "CABINET X-RAY SYSTEMS" AND REQUIRE NO EXTERNAL RADIATION SHIELDING. WELDED STEEL / LEAD-STEEL CONSTRUCTION, NO VISIBLE SHIELDING.

FDA ACCESSION NUMBER: 0710198

CE REFERENCE NUMBER: CN.CE.0402-05.09

